



Del Norte County
CROP REPORT
2023

Table of Contents

<i>Agricultural Commissioner/Sealer's Letter</i>	<i>1</i>
<i>Mission Statement</i>	<i>2</i>
<i>Forest Products</i>	<i>3</i>
<i>Field Crops</i>	<i>4</i>
<i>Livestock and Livestock Products</i>	<i>5</i>
<i>Nursery and Miscellaneous</i>	<i>6</i>
<i>Weights and Measures</i>	<i>7</i>
<i>Pest Exclusion</i>	<i>8</i>
<i>Pest Detection</i>	<i>9</i>
<i>Pesticide Use Enforcement</i>	<i>10</i>
<i>Pest Management and Eradication</i>	<i>11</i>
<i>Forest Health</i>	<i>12</i>
<i>Feature: Elkhorn Herbals</i>	<i>13</i>

Photo Credits: Babette Rose, Chris Howard, and Pixabay



DEPARTMENT OF AGRICULTURE
COUNTY OF DEL NORTE

236 Williams Drive Crescent City, CA 95531
(707) 464-0878

December 2024

Karen Ross, Secretary,
California Department of Food and Agriculture,

The Honorable Board of Supervisors of Del Norte County

Darrin Short, District 1

Joey Borges, Vice-Chair, District 4

Neal Lopez, County Administrative Officer

Valerie Starkey, District 2

Dean Wilson, Chair, District 5

Chris Howard, District 3

It is my pleasure to present the 2023 Del Norte County Annual Crop Report which is prepared under the provisions of Section 2279 of the California Food and Agricultural Code. This annual report provides a statistical description of Del Norte County's agricultural production and is compiled using the best available data on production totals and values as collected from producer responses to crop report questionnaires.

The estimated gross value of the County's agricultural commodities is \$51,392,000. The County's leading commodities for 2023 were timber valued at \$20,255,000, milk with a value of \$14,921,000, and miscellaneous horticultural products with a value of \$7,118,000.

I want to send gratitude to the Modoc and Humboldt County Departments of Agriculture and the USDA National Agricultural Statistics Service for providing the Department with assistance and training in producing the crop report. I want to extend my sincere appreciation for the efforts and cooperation of all the agricultural producers and partners who provided information for this year's report, and I would like to recognize the dedicated staff of the Del Norte County Agricultural Department for their assistance in completing and producing the information for this publication.

Respectfully Submitted,

Justin Riggs
Del Norte County Agricultural Commissioner/Sealer of Weights and Measures

Mission Statement

The mission of the Agricultural Commissioner's Office is to serve the citizens of Del Norte County by promoting and protecting the environment, the agricultural industry, public health and safety, and consumer confidence through enforcement of federal and State laws and County ordinances in the areas of health, safety, and consumer concerns.

FOREST PRODUCTS

Commodity	Production	Unit	Total Value
Timber	47,059,000	Board Ft	\$20,255,000

Board feet represents the quantity of timber cut and scaled. Miscellaneous products including all hardwoods, Christmas trees, fuelwood, poles and pilings, and split products are generally not measured in net board feet.

Timber was Del Norte County's top commodity, ranking 5th in California in terms of value.

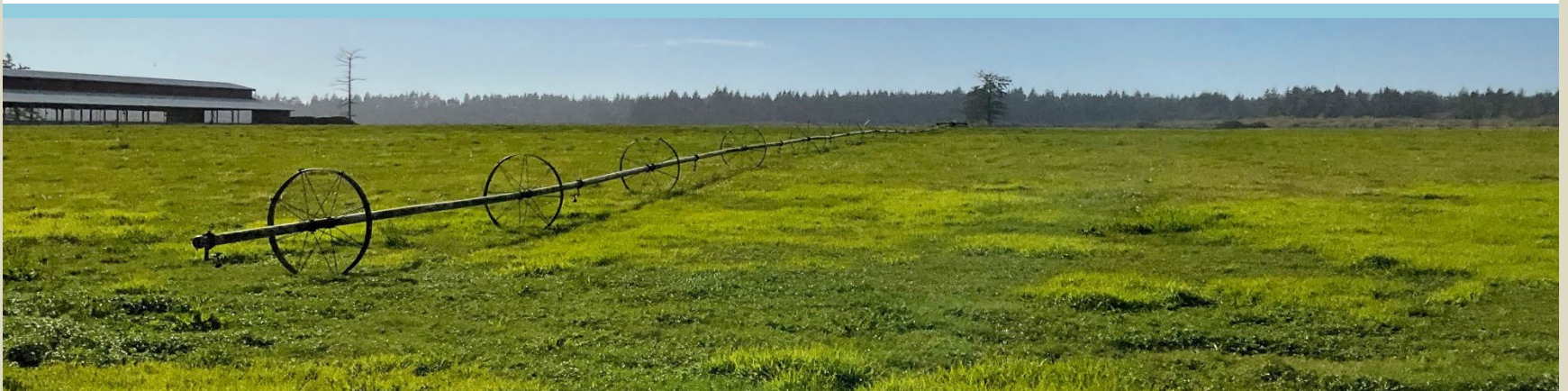


FIELD CROPS

Commodity	Acres	Yield	Production	Price	Unit	Total Value
Hay Misc.	740	3.86	2,860	\$263.53	Ton	\$753,000
Silage Misc.	2,250	5.92	13,300	\$95.67	Ton	\$1,276,000
Pasture Misc.	5,830	-	-	\$242.88	-	\$1,416,000

Note: Totals do not add due to rounding.

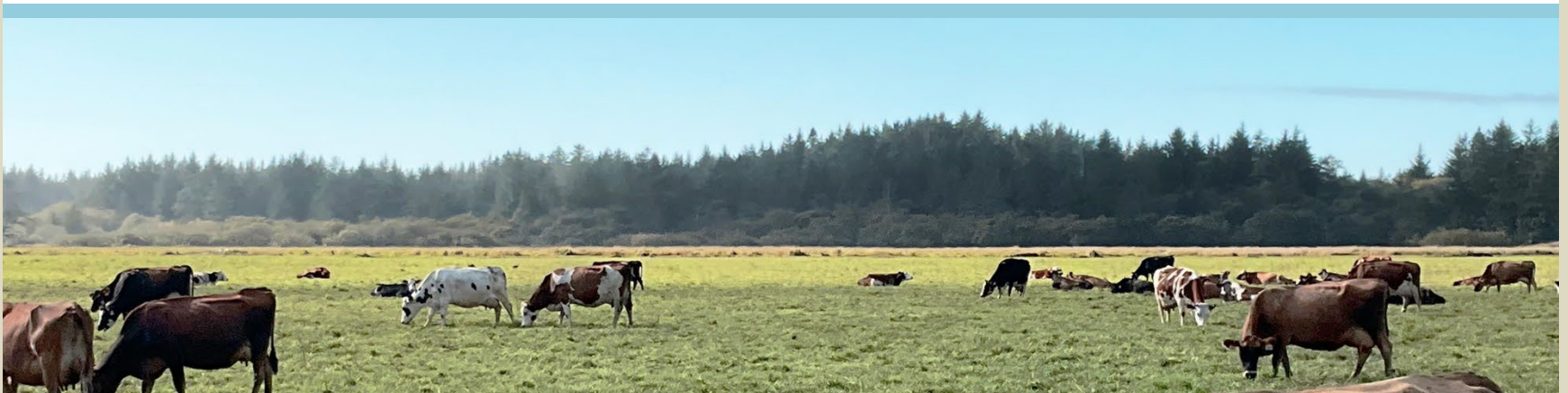
The vast majority of Del Norte County's pastureland is certified organic, providing high quality forage for livestock and supporting exceptional meat, egg, and milk production.



LIVESTOCK & LIVESTOCK PRODUCTS

Commodity	Production	Live Weight	Price	Unit	Total Value
Cattle Beef	2,150	-	\$1,165.73	head	\$2,452,000
Cattle Dairy	875	8,550 cwt	\$1,282.97	head	\$1,123,000
Livestock Misc.	-	-	-	-	\$33,100
<i>Includes chickens, sheep, goats, swine, etc.</i>					
Cow's Milk	373,000	-	\$39.99	cwt	\$14,921,000
Chicken Eggs	7550	-	\$239.59	case	\$1,809,000

Note: Totals do not add due to rounding.



NURSERY & MISCELLANEOUS

Commodity	Acres	Total Value
Horticultural Miscellaneous <i>Includes cut flowers and foliage, potted foliage and flowering plants, and propagative material.</i>	194	\$7,118,000
Miscellaneous <i>Includes fruits, nuts, and vegetables.</i>	26	\$236,000

Note: Totals do not add due to rounding.

Nursery products including Easter lilies play a significant role in the local economy and agricultural heritage of the county. The mild climate and rich soils provide ideal growing conditions for these specialty crops.



Weights and Measures

Weighing and measuring devices used for commercial purposes are inspected regularly by staff for accuracy, protecting both the device owner and the consumer.

Device Type	Number of Inspections
Counter Scales	16
Computing/POS Scales	52
Platform Scales	21
Hanging Scales	27
Truck Scales	10
Retail Fuel Meters	309
Wholesale Meters	24
Vehicle Tank Meters	4
Miscellaneous Inspections	20

Pest Exclusion

The Department regularly inspects incoming plant shipments from other California counties under quarantine or those coming from out of state for various pests of concern.

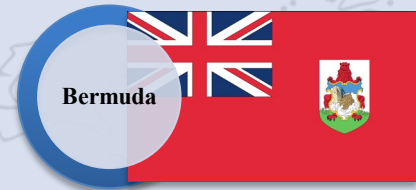
In 2023, five interceptions resulted in the detection of Q-rated bacterial and fungal pest detections. Three of the fungi were previously undescribed species.

Additionally, 31 inspections resulted in B-rated pest detections. These detections were mostly of the fungal genus *Colletotrichum*, which is not known to occur in Del Norte County and which causes the plant disease anthracnose. The hosts were mostly palms and other tropical plants.

Del Norte County crops are exported to Bermuda, Canada, and Puerto Rico, with Canada being the largest importer. Shipments are inspected to ensure they meet the importing requirements of the various regions.

*State Phytosanitary
Certificates Issued: 13*

*Federal Phytosanitary
Certificates Issued: 41*



Pest Detection

Insect trapping is a critical component of the State's pest detection program, targeting invasive species of special concern. The spongy moth, known for defoliating vast areas of forest, poses a serious threat to California's diverse ecosystems, while the Japanese beetle targets a wide variety of plants and crops. Traps are regularly inspected to ensure early detection, allowing for rapid response measures to prevent the establishment and spread of these invasive species.

14 Japanese beetle traps

105 spongy moth traps



Zero pest detections!

Pesticide Use Enforcement

The Del Norte County Agriculture Commissioner's Office is committed to ensuring the safe and effective use of pesticides through its comprehensive Pesticide Use Enforcement Program. This program is implemented in accordance with state laws and regulations established by the California Department of Pesticide Regulation (DPR). Key responsibilities include issuing pesticide use permits, conducting inspections of agricultural and non-agricultural pesticide applications, monitoring records for compliance, and investigating pesticide-related incidents.

The program also emphasizes education and outreach to promote safe practices among pesticide users and to protect public health, workers, and the environment. By working closely with DPR, industry stakeholders, and the community, the county ensures that pesticide use aligns with state-mandated safety standards and local agricultural needs.

Presite Inspections	26
Field Fumigation Inspections	4
Structural Inspections	2
Number of NOIs Reviewed	460
Restricted Materials Permits Issued	3
Operator ID Numbers Issued	9
Number of Enforcement Actions	2

Pest Management & Eradication

The Del Norte County Department of Agriculture is dedicated to managing noxious weeds. Our aim is to control invasive weeds with a particular focus on species of limited distribution with the possibility of eradication. Some of these include meadow and spotted knapweed, giant and Himalayan knotweed, yellow and purple star thistle, Spanish heath, and skeleton weed.

The Department also targets widely distributed weeds in the County such as tansy ragwort, the only weed for which there is a county ordinance, and weeds in sensitive locations such as Scotch broom on wildlands. Special care is taken to protect biocontrols that might be present in the area including the cinnabar moth caterpillar (pictured) and the tansy flea beetle. When flea beetles are abundant, we work with neighboring Humboldt County to distribute these beneficial insects beyond our area onto lands in which other pest management methods either cannot be used or are impractical.



Forest Health

The Smith River Complex Fire, which began in August 2023 due to lightning strikes, burned over 94,000 acres, affecting large swathes of public land managed by the U.S. Forest Service. While the fire was intense, fire ecologists have noted that it had a significant portion of low to moderate soil burn severity, indicating it could ultimately contribute to forest health by clearing out undergrowth, returning nutrients to the soil, and allowing fire-adapted plant species to thrive. Approximately 51% of the area was classified as low or unburned, which is beneficial for post-fire recovery .

However, the fire also led to some high-severity burn areas, requiring targeted suppression repair and restoration efforts. These activities, including stabilizing slopes and maintaining drainage systems, are essential to prevent erosion and protect critical watersheds like the Smith River, which supports rich ecosystems and cultural resources. The Forest Service Burned Area Emergency Response (BAER) program conducted post-fire assessments in order to implement emergency stabilization measures aimed at protecting public safety and promoting ecological recovery.

Additionally, *Phytophthora ramorum*, the plant pathogen that causes Sudden Oak Death, continued its spread within the county. The EU1 and NA1 strains of the pathogen expanded in 2023 since their discovery in prior years, despite containment efforts. Surveys found additional infections in tanoaks, and *P. ramorum* was detected in three more creeks, with the furthest north infestation occurring along Rowdy Creek, approximately 6 km away from the original EU1 site situated along Hwy 197 which was discovered in 2020. Efforts to control the spread were delayed due to wildfires and locating further infection sites has been challenging due to the rugged terrain. Monitoring and discussions on management strategies are ongoing.

Sources:

<https://smithriveralliance.org/smith-river-complex-fire/>

<https://wildrivers.lostcoastoutpost.com/2024/apr/29/six-rivers-officials-resume-suppression-work-smith/>

<https://www.suddenoakdeath.org/wp-content/uploads/2023/10/COMTF-Report-October-2023-2.pdf>



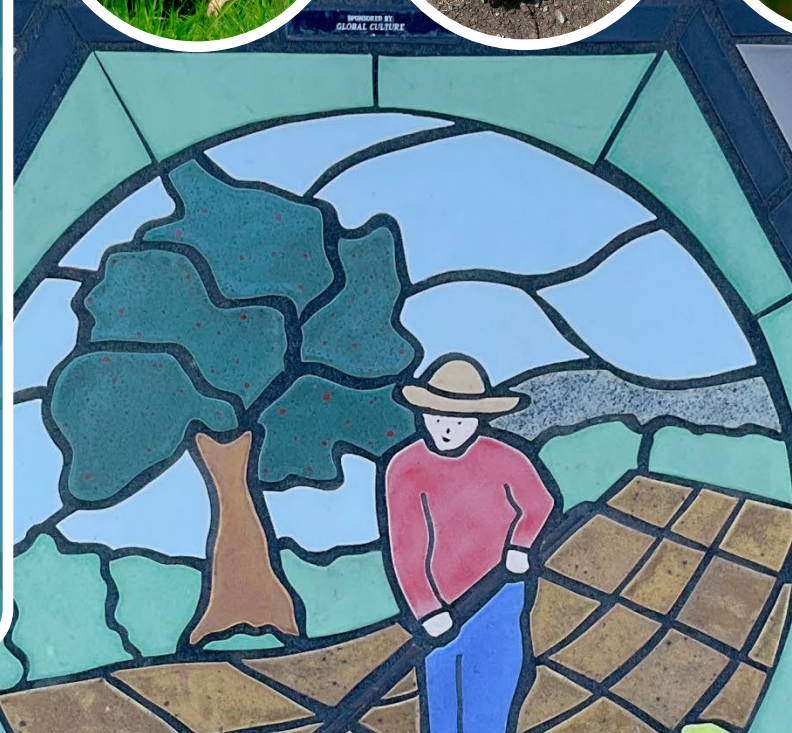
Feature: Andrea Lanctot and Elkhorn Herbals Plant Nursery

Andrea Lanctot's life story is a testament to her passion for gardening, sustainable living, and community resilience. Born and raised in Rhode Island, Andrea's early years were deeply influenced by her mother and aunt's extensive one-acre garden. This early immersion in growing and processing homegrown food ignited a lifelong dedication to plants and the environment. Andrea's first job at a plant nursery further cemented her love for working with plants. Although she initially pursued botany at Cal Poly Humboldt, her focus shifted to environmental science and appropriate technology. This pivot spurred her interest in sustainable living, self-sufficiency, and climate resilience. Post-college, Andrea gained invaluable hands-on experience working on small farms and a permaculture homestead in Orleans, CA. Her work with the UC Cooperative Extension allowed her to engage with local tribes, schools, and traditional food systems, further deepening her connection to agriculture and community. In 2018, Andrea moved to Del Norte and lived on a small medicinal herb nursery called Crimson Sage Medicinal Nursery. She also took a position with the Wild Rivers Community Foundation as a youth leadership facilitator, where she ran a summer program at College of the Redwoods. Living on the property of Ocean Air Farms, Andrea seized the opportunity to start her own nursery using a small greenhouse. By 2019, she transitioned to the Del Norte and Tribal Lands Community Food Council as the Food Program Coordinator and began planning her nursery business. The onset of COVID-19 in early 2020 coincided with Andrea's first batch of plants ready for sale. Despite the pandemic's challenges, her nursery's initial success was bolstered by the support of Ocean Air Farms, which provided crucial greenhouse space and a farm stand for selling her plants. By fall 2020, Andrea expanded her nursery's reach by setting up a stand at Wild Rivers Market and participating in the Farmers Market. In 2022, as the nursery's demands increased, Andrea moved off Ocean Air Farms to set up production at Fire Fern Nursery. Despite considering leaving the Food Council to focus on her nursery, she stepped into the role of Interim Director and later Director when the opportunity arose. Andrea's vision for Elkhorn Herbals Plant Nursery is to cultivate edible, medicinal, and culinary plants while empowering people to grow their own food. She emphasizes choosing plant varieties suited to the Pacific Northwest's coastal climate, ensuring disease resistance and optimal planting times for success. Andrea's dedication to medicinal herbs stems from her personal experiences with chronic illness. Frustrated with conventional medicine's focus on symptom management rather than root causes, she explored the healing potential of plants. Her interest in locally grown medicinal herbs aims to provide fresher, more potent alternatives to imported products, enhancing their nutritional and medicinal value. Looking ahead, Andrea envisions a future with increased local food production in Del Norte, particularly in vegetables, fruits, and specialty crops. She advocates for cooperative farming models to share resources and markets, fostering a resilient and sustainable agricultural community. With Del Norte's favorable climate for year-round growing, Andrea's dream of a farm cooperative could significantly enhance the region's food security and self-sufficiency. Andrea Lanctot's journey from a childhood garden to founding Elkhorn Herbals Plant Nursery is a story of passion, resilience, and community commitment. Her work continues to inspire and support local food production, sustainable living, and the healing power of plants.



THANK YOU ALL!

The Del Norte County Department of Agriculture extends our utmost gratitude to our growers, associated industries, and especially those who responded to the 2023 crop report survey. This report would not be possible without the valuable data you generously shared. We deeply appreciate your dedication and support!



**Agricultural
Commissioner/Sealer**
Justin Riggs

Administrative Secretary
Vanessa Rodgers

**Supervising Agricultural
Inspector/Biologist**
Chelsea Grochowski

**Agricultural Inspector/
Biologist**
Carlos Jimenez

Agricultural Technician
Shane Allen

**Seasonal Agricultural
Technician**
Corey Morgan

